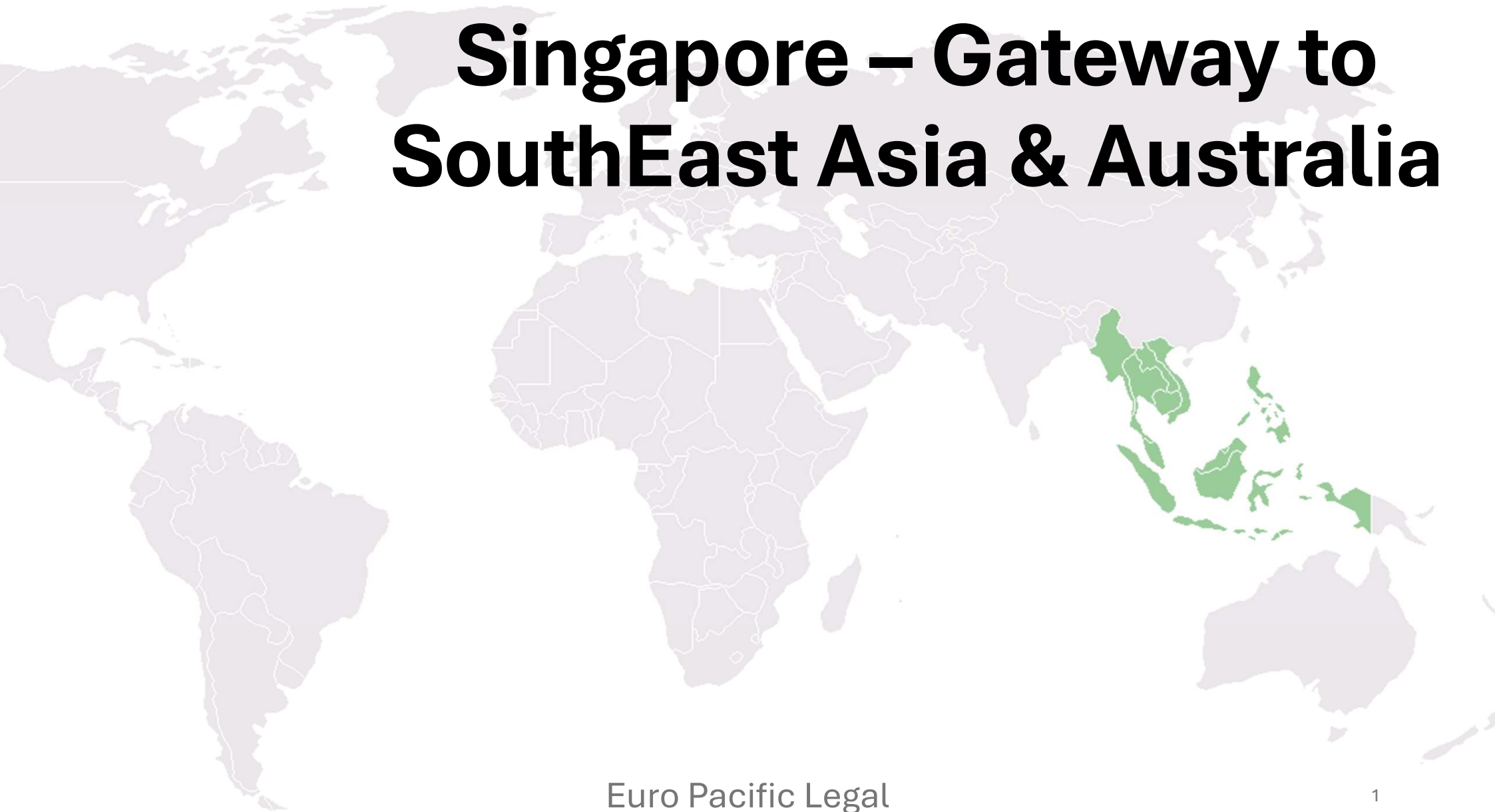


Singapore – Gateway to SouthEast Asia & Australia



The Commonwealth

A world map where countries belonging to the Commonwealth are highlighted in a dark purple color. These include Canada, the United Kingdom, India, Australia, and several countries in Africa and the Caribbean. A green circle is drawn around the Southeast Asian region, specifically highlighting Indonesia and Malaysia.

Chairman
Commonwealth Club of Rome

A world map with a light purple background. The countries of Singapore and Australia are highlighted in a darker green color. The title 'Singapore – Gateway to Australia' is centered over the map.

Singapore – Gateway to Australia

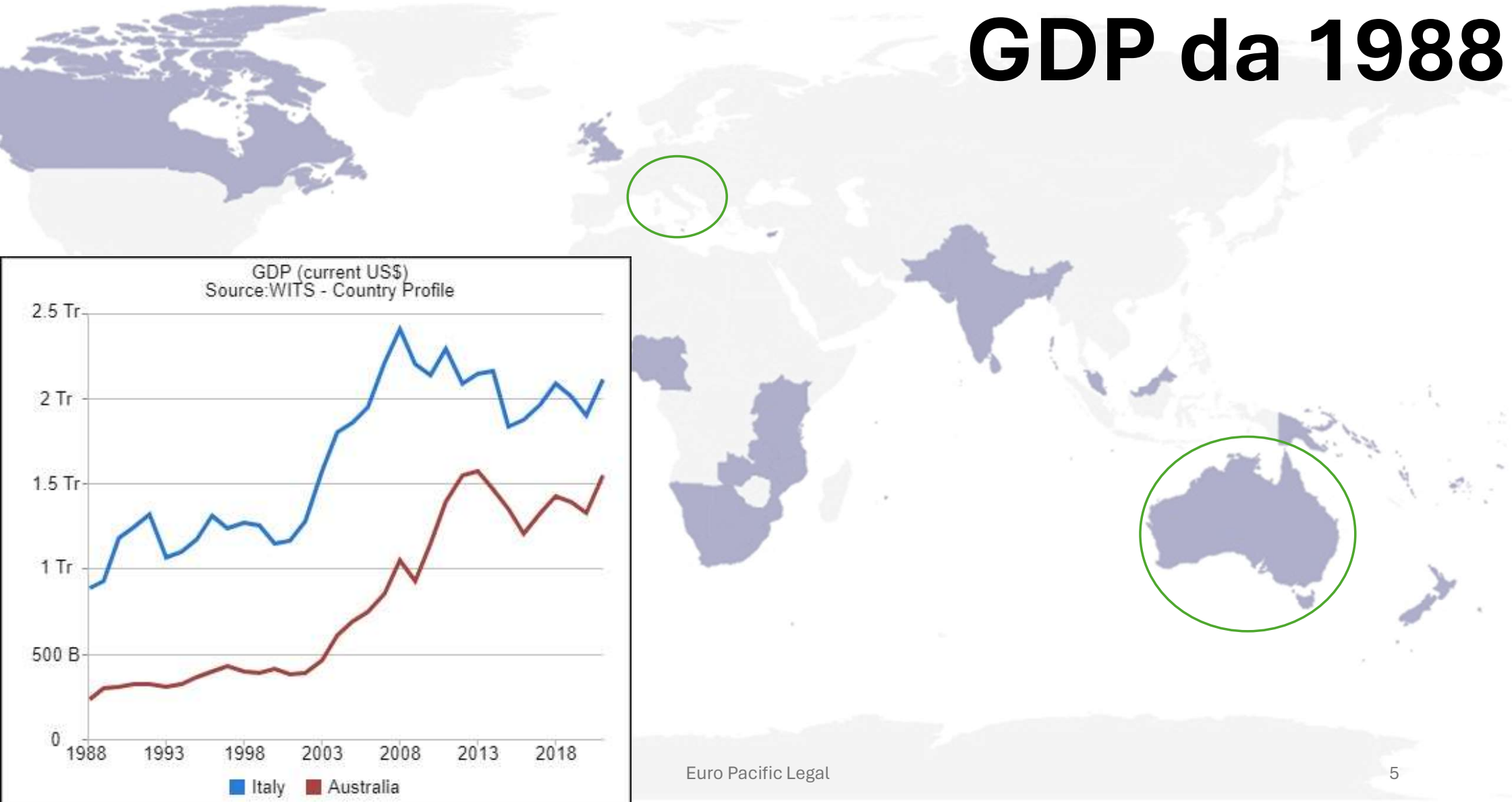
Edward Mura
Australian Lawyer
Euro Pacific Legal Group

GDP 2022

#	Country	GDP (nominal, 2022)	GDP (abbrev.)	GDP growth	Population (2022)	GDP per capita	Share of World GDP
1	United States	\$25,462,700,000,000	\$25.463 trillion	2.06%	338,289,857	\$75,269	25.32%
2	China	\$17,963,200,000,000	\$17.963 trillion	2.99%	1,425,887,337	\$12,598	17.86%
3	Japan	\$4,231,140,000,000	\$4.231 trillion	1.03%	123,951,692	\$34,135	4.21%
4	Germany	\$4,072,190,000,000	\$4.072 trillion	1.79%	83,369,843	\$48,845	4.05%
5	India	\$3,385,090,000,000	\$3.385 trillion	7.00%	1,417,173,173	\$2,389	3.37%
6	United Kingdom	\$3,070,670,000,000	\$3.071 trillion	4.10%	67,508,936	\$45,485	3.05%
7	France	\$2,782,910,000,000	\$2.783 trillion	2.56%	64,626,628	\$43,061	2.77%
8	Russia	\$2,240,420,000,000	\$2.240 trillion	-2.07%	144,713,314	\$15,482	2.23%
9	Canada	\$2,139,840,000,000	\$2.140 trillion	3.40%	38,454,327	\$55,646	2.13%
10	Italy	\$2,010,430,000,000	\$2.010 trillion	3.67%	59,037,474	\$34,053	2.00%
11	Brazil	\$1,920,100,000,000	\$1.920 trillion	2.90%	215,313,498	\$8,918	1.91%
12	Australia	\$1,675,420,000,000	\$1.675 trillion	3.62%	26,177,413	\$64,003	1.67%
13	South Korea	\$1,665,250,000,000	\$1.665 trillion	2.56%	51,815,810	\$32,138	1.66%
14	Mexico	\$1,414,190,000,000	\$1.414 trillion	3.06%	127,504,125	\$11,091	1.41%
15	Spain	\$1,397,510,000,000	\$1.398 trillion	5.45%	47,558,630	\$29,385	1.39%
16	Indonesia	\$1,319,100,000,000	\$1.319 trillion	5.31%	275,501,339	\$4,788	1.31%



GDP da 1988



ConfAssociazione Australia

Video



CONFASSOCIAZIONI

Confederazione Associazioni Professionali



L'Economia Australiana

- 12^a economia mondiale
- Ricchezza di risorse naturali
- Alto reddito pro-capite
- Debito pubblico contenuto





CONFASSOCIAZIONI

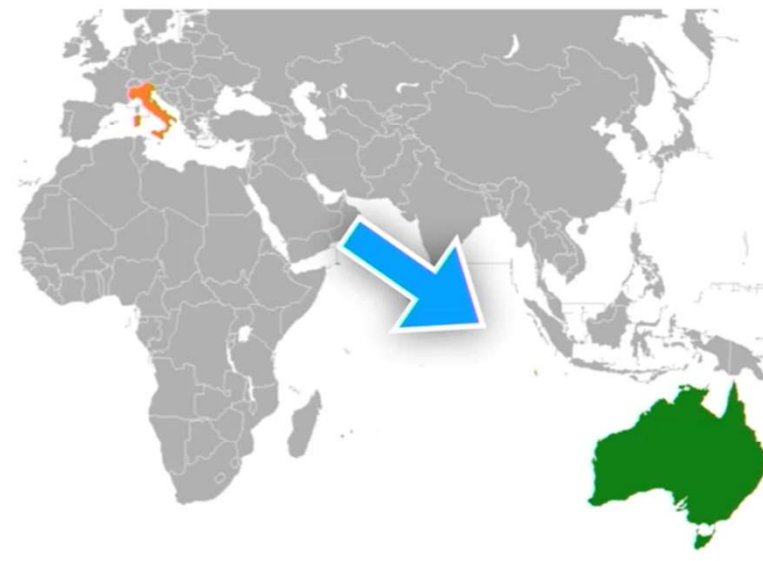
Confederazione Associazioni Professionali



Commercio Italia-Australia nel 2022

Il Boom dell'Export Italiano in Australia

- Export 2022: €5,2 miliardi
- Record degli ultimi anni (2022 +21% su 2021)
- Incremento e trend positivo





CONFASSOCIAZIONI

Confederazione Associazioni Professionali



Trend di Crescita dell'Export Italiano

Dinamica dell'Export Italiano verso l'Australia

- Crescita costante negli ultimi 5 anni
- Export 2022: €5,253 miliardi
- Crescita del 21,9% rispetto al 2021
- Ripresa dopo contrazione del 2020

2020	2021	2022
3.691,48	4.317,22	5.253,01
-7,8	17,1	21,9

* Fonte: Infomercati Esteri



CONFASSOCIAZIONI

Confederazione Associazioni Professionali



Importazioni Australiane dall'Italia

Crescita Import Australiano da Italia

- Import 2022: €1 miliardo
- Raddoppio rispetto al 2021
- Prodotti minerali energetici: 39%
- Altre categorie: metalli, prodotti agricoli, tessili





CONFASSOCIAZIONI

Confederazione Associazioni Professionali



Investire in Australia

Australia: Terra di Opportunità per gli Investimenti italiani

- 29 anni di crescita del PIL pre-pandemia
- Ripresa post-pandemia e sviluppo infrastrutturale
- Leader in mining e materie prime, incl. litio e terre rare
- Accordo di libero scambio UE e qualità della vita
- Oltre 300 imprese italiani presenti sul territorio australiano



300 Imprese Italiane

A world map with several regions highlighted in a light purple color, including North America, parts of Europe, India, parts of Africa, and Australia. The map is positioned in the background of the slide.

Da più di 50 settori di cui:

Prodotti Industriali

Moda

Edilizia e design

Spedizione e Logistica

Industria Alimentare

Machine Agricole

Attrezzature HoReCa

Arredo e design

Materiale edilizia

Automobilistico

Macchine Lavorazione

Infrastrutture

Italiani in Australia

Circoscrizione estera

Africa, Asia, Oceania e Antartide.

Senatore Giacobbe

On. Care

Iscritti al Aire

130,000

Votanti

24,000

Nati in Italia

171,000

Discendenza italiana

1,108,000

Australia's national reconstruction fund



The Australian Government created the National Reconstruction Fund Corporation (NRFC) to facilitate increased flows of finance into priority areas to help diversify and transform Australia's industry and economy.

Australia's national reconstruction fund

A world map is shown in the background, with Australia highlighted in a dark purple color. The rest of the map is in a light grey color.

They offer debt finance, equity finance and guarantees for compelling proposals in seven priority areas of the Australian economy.

They do not provide grants.

Australia's national reconstruction fund

A\$15 billion

Australia's national reconstruction fund

Our priority areas



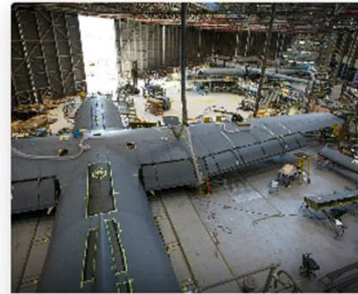
Resources



Transport



Medical science



Defence capability



Renewables and low emission technologies



Agriculture, forestry and fisheries



Enabling capabilities



Euro Pacific Legal



Australia's national reconstruction fund



The Corporation must allocate investments so as to target the following funding levels over the medium to long term:

- (a) renewables and low emission technologies—up to \$3 billion;
- (b) medical manufacturing—\$1.5 billion;
- (c) value adding in resources—\$1 billion;
- (d) critical technologies in the national interest—\$1 billion;
- (e) advanced manufacturing—\$1 billion;
- (f) agriculture, forestry, fisheries, food and fibre—\$500 million.

Australia's national reconstruction fund

A world map with a light purple tint. The continent of Australia is highlighted in a darker shade of purple. Other countries in the Asia-Pacific region, including India, Indonesia, and parts of Southeast Asia, are also highlighted in a lighter shade of purple. The rest of the world map is in a very light, almost white, shade.

The Corporation can only invest in proposals that are “solely or mainly Australian-based” .

Useful contacts for Australia

A world map with Australia highlighted in purple. The map is light gray, and the highlighted Australia is a darker purple. The title 'Useful contacts for Australia' is centered at the top in a large, bold, black font.

Austrade Milan

Australian Embassy Rome

Australian Business Network

Algebra

Ambasciata Italiana Canberra

ICE Syd

Consolati - Syd Melb Adel Perth Bris

Camere di Commercio – Syd Melb Perth Bris

Euro Pacific Legal